

Template for L^AT_EX poster using the CTP style

Tabish Qureshi

Centre for Theoretical Physics, Jamia Millia Islamia, New Delhi, India.

Abstract

This is an example of the new way of typesetting posters in CTP, in L^AT_EX. It is based on the L^AT_EXbeamerposter package [1], and adapted from the CPBG poster style [2]. To have a consistent layout of the posters prepared in our centre the beamertheme *ctpposter* was created. Using this poster style it is rather easy to create nice posters in L^AT_EX if you have some basic knowledge in using the beamer package

Requirements

To compile your poster a current version of the following packages are required

- latexbeamer
- beamerposter

All those packages are contained in the TexLive distribution, which is also installed on CTP computers.

Features

Since the beamer package is used, basically all latexbeamer functions are supported [3]. The *ctpposter* style comes with some special features:

• Poster Frame

A *ctp* blue frame surrounding the whole poster and the title is drawn automatically

• Poster Title

The title, authors, institute and the jub logo are placed automatically at the top of the poster. You can define them easily with the commands:

```
\title{...}
\author{...}
\institute{...}
```

The frame around the Title is also adjusted automatically to fit the number of lines in the title

• Blocks

Up to now there are two different block environments. The standard block:

```
\begin{block}{Caption}
.....
\end{block}
```

This creates a block with justified text and a fancy underlined green title. And then there is the alerted block:

```
\begin{alertblock}{Caption}
.....
\end{alertblock}
```

With this environment you can create a nicely framed block.

• Bibliography

As expected, equations are a breeze

$$w = 2\pi \left(\frac{(\lambda_d L / 2\pi)^2 + 4\epsilon^4}{\lambda_d d L / 2\pi} \right)$$

The default beamer bibliography style was also tweaked so that you can use the standard bibliography commands.

```
\begin{thebibliography}{#}
environment contents
\end{thebibliography}
```

Remarks

- There are some warning messages due to the large font scaling. Ignore them!
- Sometimes the borders and frames look weird after compiling. Compile again, and it will be fine!

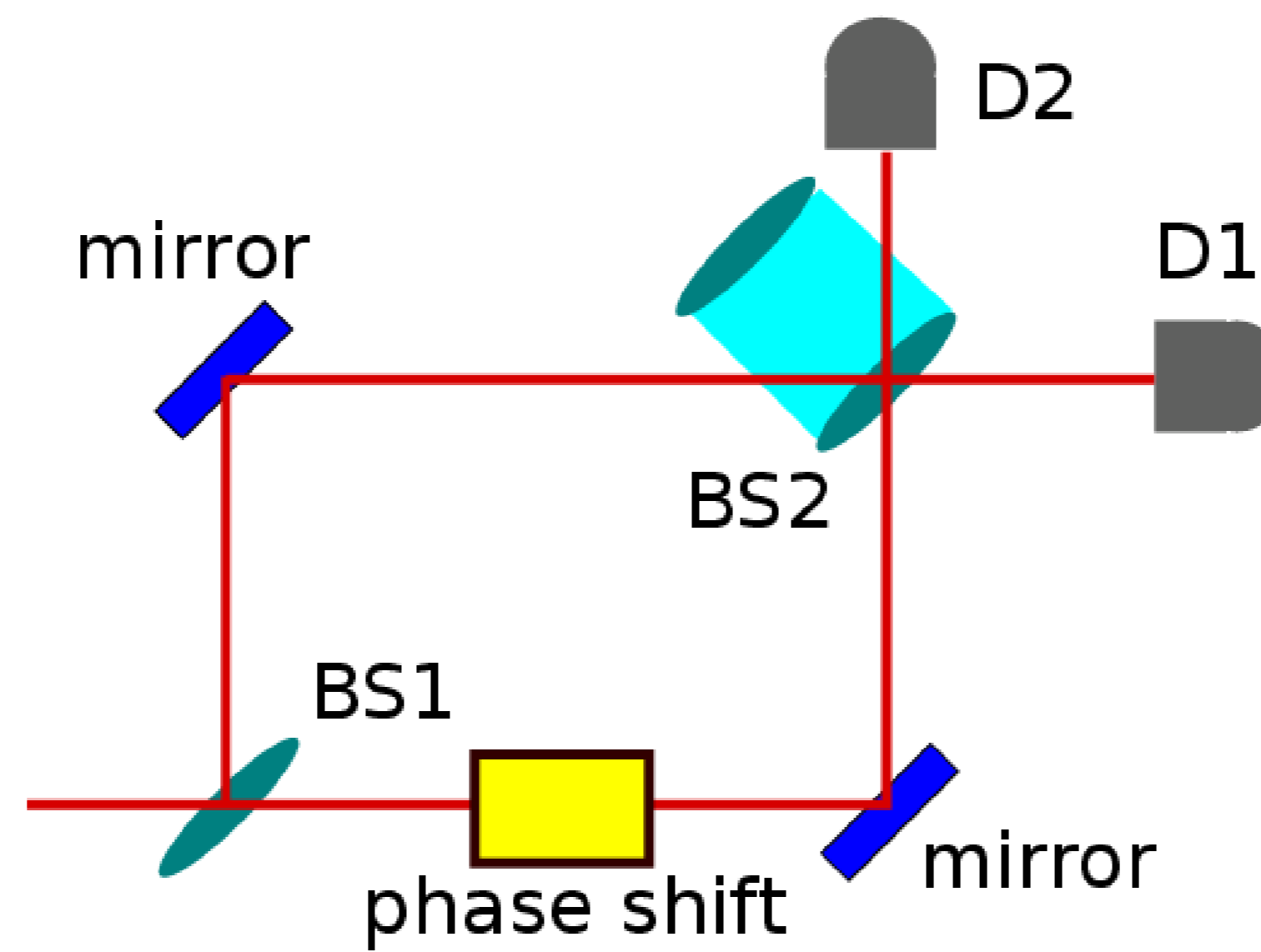
References

- [1] <http://www-i6.informatik.rwth-aachen.de/~dreuw/latexbeamerposter.php>
- [2] <https://teamwork.jacobs-university.de/8443/confluence/display/CoPandBiG/LaTeX+Poster>
- [3] <http://www.ctan.org/tex-archive/macros/latex/contrib/beamer/doc/beameruserguide.pdf>

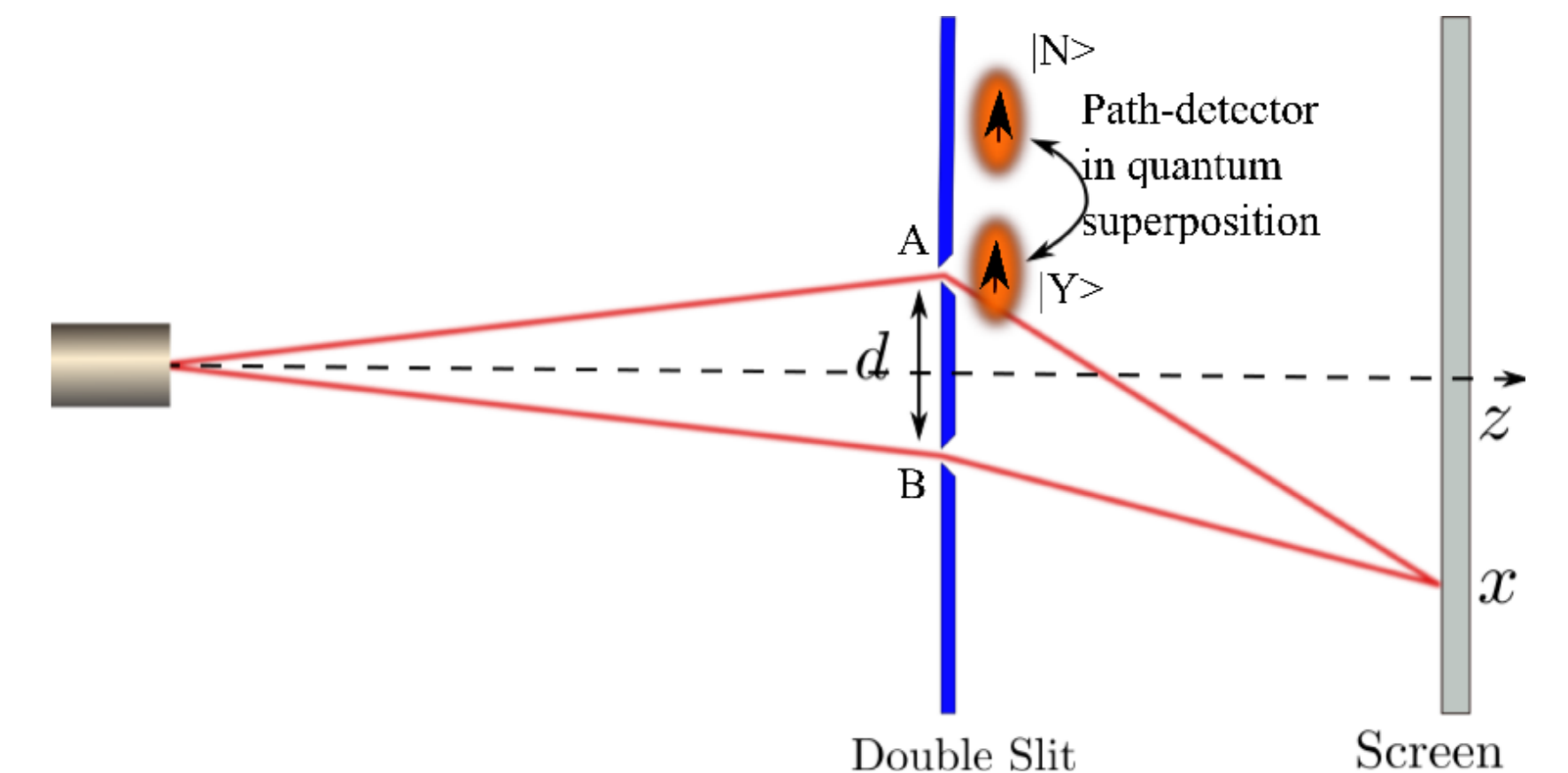
Examples

As an example, a mixture between a two and three column style is shown here. How to use the columns environment is detailed in the latexbeamer manual [3]. It is a bit tricky to find the right widths for columns. A good solution is to use a columnwidth of $0.28 \backslash \text{paperwidth}$ if you want to use three columns. So that the space between the columns and the border of the poster is $(1 - 3 \cdot 0.28) / 4 = 0.04$. The columns are always centered to the page, so only have to give the right width, the placing is done automatically. Here a two column layout is shown. The right column was chosen to be twice as wide as the left column plus space, which is $2 \cdot 0.28 + 0.04 = 0.6$. So that the bigger right column can be divided into two columns with the same width as the left column. which looks like this:

Left



Right



These pictures were drawn using the Inkscape package, which is a great tool for drawing beautiful figures. It can save figures in various formats. It is preferable to save your graphs generated from Mathematica or other packages as pdf files in order to include them in posters.

Blocks and Colors

The colors of the blocks and their headings and texts can be changed easily by redefining the beamer colors. Therefore you can use all color names defined by the xcolor package or you can define your own colors. Some nice colors are already defined within the *ctpposter* style.

normal blocks

For the normal blocks there are two colors one for the title and one for the block body:

```
\setbeamercolor{block title}
{fg=red,bg=white}
\setbeamercolor{block body}
{fg=black,bg=white}
```

The *fg* color sets the textcolor and *bg* the background color. For the normal blocks it makes no sense to use another *bg* color than white. You can try to change it, but it will look odd!

nred

```
\setbeamercolor{block alerted title}
{fg=black,bg=nred}
\setbeamercolor{block alerted body}
{fg=black,bg=white}
```

norange

```
\setbeamercolor{block alerted title}
{fg=black,bg=norange}
\setbeamercolor{block alerted body}
{fg=black,bg=white}
```

Alerted blocks

For alerted blocks there is:

```
\setbeamercolor{block alerted title}
{fg=black,bg=gray!50}
Here fg is the color of the title and bg the color of the
frame. The color of the body is set via
\setbeamercolor{block alerted body}
{fg=black,bg=gray!30}
```

As you can see, it's a god idea to use the shaded frame color for the body.

nyellow

```
\setbeamercolor{block alerted title}
{fg=black,bg=nyellow}
\setbeamercolor{block alerted body}
{fg=black,bg=white}
```

ngreen

```
\setbeamercolor{block alerted title}
{fg=black,bg=ngreen}
\setbeamercolor{block alerted body}
{fg=black,bg=white}
```

Conclusion

As you can see it is possible to make your poster very colorful. But in most cases this will overload your poster. If you don't change the color settings you will get the default look, which consists of some shades of blue and some decent green highlights. These colors were chosen carefully to keep a consistent look of the poster. The *ctpposter* style is available on the CTP intra-net page. You can download it and compile this example out of the box with pdflatex. If you want to work on your computer make sure that you have a recent TeX distribution (TeXlive 2008, MikTeX) and download the beamerthemectpposter.sty file from our teamwork page and put it in your local TeX directory.

If you have any questions, criticism, ideas, do not hesitate to write an email to tabish@ctp-jamia.res.in

Happy
T_EX'ing!